

THEATRE
ROYAL

ROYAL
CONCERT
HALL

Visual Story for visiting
the Royal Concert Hall
Nottingham

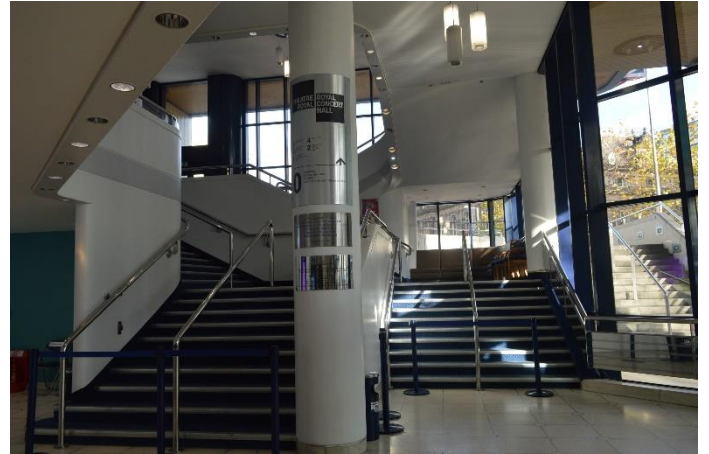
I am going to see a show at the Royal Concert Hall



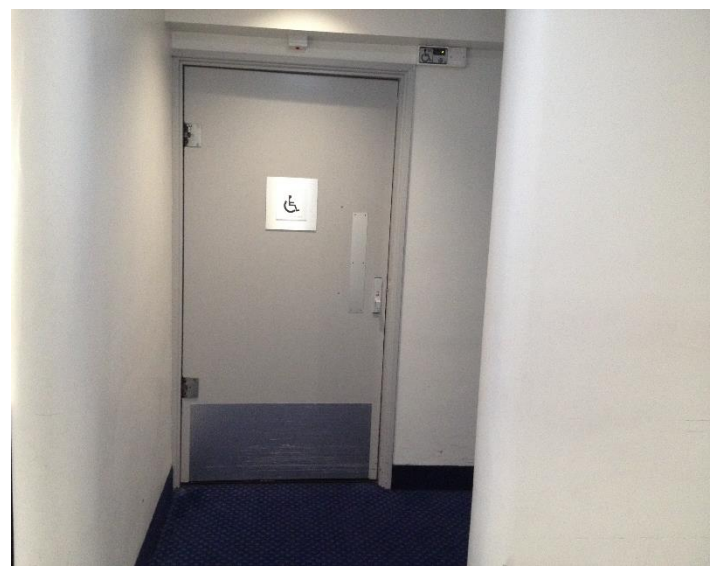
When I get inside the Royal Concert Hall it may be busy.



The Royal Concert Hall has five floors in total. My seats will be in the Stalls, on Tier 1 or on Tier 2. To get to my seats I may have to climb a few stairs or use the lift



Before we take our seats in the auditorium I can use the toilet. If I need to use the toilet, I can ask the person I am with



We will show our tickets to a steward in a uniform who will look like this.



The steward will look at our tickets and tell us where we need to go. The letters and numbers on the tickets tell us where we need to sit. It is not a choice.



Then we will go inside the auditorium. The Royal Concert Hall is very big and there are lots of seats!



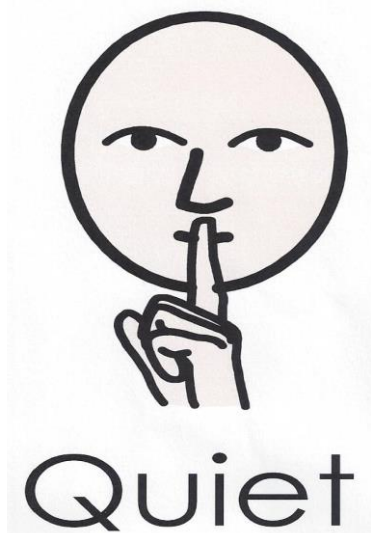
My seat will look like this



If I can't see the stage clearly I can ask an adult for a booster seat to sit on



When it is time for the show to start a voice will ask everyone to turn off their mobile phones. The Royal Concert Hall will get darker and everyone needs to be quiet.



When the show starts I will see performers coming on to the stage. I will try and be as quiet as I can so I can hear everything



Seeing a show at the Royal Concert Hall is a bit like seeing something on TV or in a film but the people are right there in front of you on the stage



Photo Credit
Dom Henry

Sometimes, parts of the show can be loud. If the sound bothers me I can put my hands over my ears or wear my ear defenders



In the middle of the show there is a break. This is called the interval. I can use the toilet or buy a drink or snack from the kiosk. The interval is usually 20 minutes.



After the interval everyone will come back and sit down in their seats again. It will get darker and quieter again just like at the beginning of the show



At the end of the show, the performers may come out on to the stage and bow. Many people will clap and cheer so the performers will know how much they liked the show



Photo Credit
Dom Henry

If I want to clap I can. If the clapping is too loud, I can cover my ears or wear my ear defenders



After the show has finished we will leave the Royal Concert Hall



I am very excited to visit the Royal Concert Hall!